



Configuration Manager™ Software Module

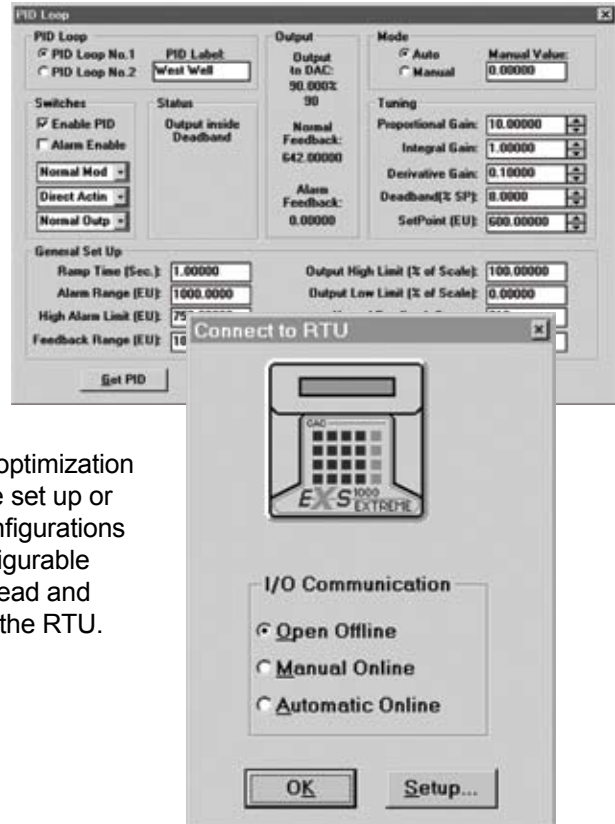
Configuring Weatherford's **EXS-1000™** remote terminal unit (RTU) is fast and easy using Weatherford's *Configuration Manager* software. It is no longer necessary to look up or memorize parameter numbers and code choices. Parameters are automatically set up and assigned specific codes, at the click of a button. An additional window is provided to program parameters one number at a time.

Configuration Manager software is a companion Windows® program that supports *EXS-1000* RTUs. Versions are available for the standard, electric submersible pump (ESP), iESP, eESP, gas-lift optimization (GLO) and AGA3/WAG firmware models. RTUs can be set up or programmed online or offline with the software and configurations can be archived in files. The program transfers all configurable parameters to and from the RTU. Parameters can be read and saved "to" or "from" a file and transferred "to" or "from" the RTU. Standard configuration menu features include:

- Analog inputs and outputs
- Digital inputs and outputs
- PID loops
- AGA3 calculations
- Data logger
- Host interface
- System parameters

On-line display menu features include:

- Input/output
- Alarms
- AGA3

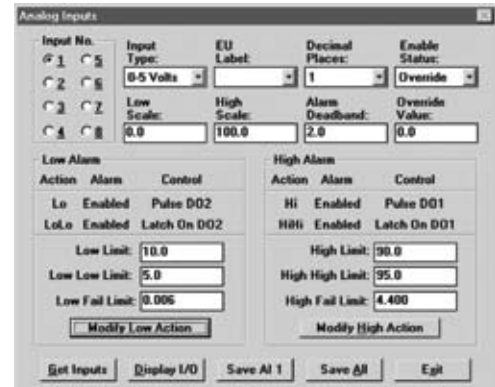




Configuration Manager Software Module

Features, Advantages and Benefits

- Intuitive Windows-based operator interface
- Build RTU configurations on-line or off-line
- Configure RTUs without disturbing host system
- Automates PC port set up by “remembering” port settings
- Automatically align configuration files with the RTU
- Multiple protocols and ports ease use with existing SCADA systems
- Configure old, new and future versions of eP RTUs
- **Automatic Control Logic™ (ACL)** available as an option



The Tools Menu includes an automatic data logger retrieval function. Log data is stored in a spread sheet compatible file format.

Each configuration dialog has a dedicated Help topic which gives a functional description and lists every modifiable parameter with its attributes.

Ordering Information

Part Number	Description
PC54-00008-01	EXS-1000 GLO Configuration Manager software module
PC54-00008-02	EXS-1000 ESP, IESP, eESP Configuration Manager software module with Automatic Control Logic compiler
PC54-00008-03	EXS-1000 AGA3/WAG Configuration Manager software module

Specifications

System requirements	Personal computer or laptop with a serial port
Operating system	Windows NT/2000/XP
Hard disk requirements	2 Mb
Connection	Serial port link to the RTU(s)

Options

Automatic Control Logic software module is available as an add-on.